

GIBcam .Info

Initial / reinstall GIBcam software

Before beginning the installation should be following things ready:

- present GIBcam / SENTINEL license key (for single license blue colour, for network license red colour), labeled as a USB stick
- GIBcam installation kit for the favored [GIBcam platform](#) - the platform also defines the necessary system requirements
- ACC software (hasp * .exe) for the administration of a network license
- Optional: INTERFACE license file for the already existing CAD-INTERFACE data interface NET floating licensing
- Optional: installation files (packed in FLEXNET. RAR) for the establishment of the INTERFACE FlexNET service on the license server

The installation must be carried out with **administrator privileges**.

Carry out the installation A or B based on the steps described on the following pages according to Variant.

After a successful installation, it is recommended to check for available, released updates of the GIBcam software or the INTERFACE data interface. Do this by executing the integrated GIBcam Update Wizard under the menu item **<Help/Update>**. If updates are available, the required files are copied from the GIBcam server and stored in the download directory for the installation.

Internet access is required to check the update or to retrieve. The data communication is done using the FTP protocol (ftp.gibcam.com).

Now, test the functionality of the communication for integrated support message functionality. To run the built-in wizards under the menu **<Help/Support>**. This is a simple SMTP client. Optionally the dispatch over an existing MAPI-enabled mail software can be.

Internet access is also required for the support message function.H

If you have performed the installation with a separate user account, log on now with the regular account and repeat the function checks for data interface, post processor, software upgrade and support message function.



Do it smart - use CAM competence ... GIBcam CAD/CAM software

www.gibcam.com

VARIANTE A single license

1.

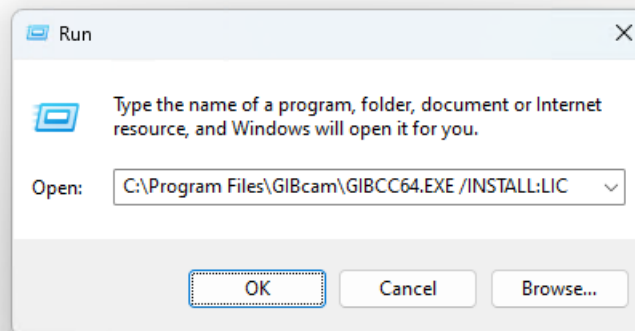
Insert the license key for GIBcam in a free USB port on the current computer. The license key should be immediately recognized by the operating system (message, LED lights up). Drivers are automatically installed. As soon as the operating system reports the readiness for the new hardware component, can be continued.

2.

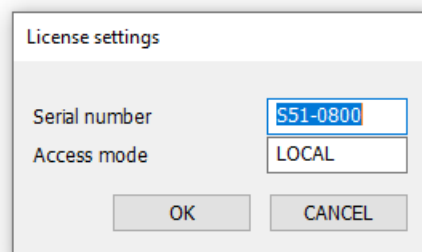
Start the GIBcam setup kit and carry out the installation. A directory must be specified or selected, which subsequently represents the GIBcam program directory.

Then start GIBcam. Normally the GIBcam licence key is recognised automatically - otherwise an additional configuration step must be carried out: the new GIBcam serial number must be entered. This is simply done using the command line call via [WIN]+[R]:

GIB*.EXE /INSTALL:LIC**



In the dialog box that appears, enter GIBcam serial number and to specify the access mode **LOCAL** is.



3.

Check the basic functionality of additionally licensed CAD /INTERFACE data interfaces. For single workstations, these are licensed via the MAC address of the computer or using a separate USB WLAN stick via FlexLM.

4.

If a separate post processor file belongs to the scope of the GIBcam installation files, you enable it under menu point **CNC/Options**.

VARIANTE B network license

1.

Insert the license key for GIBcam in a free USB network computer/server. The license key should be immediately recognized by the operating system (message, LED lights up). Drivers are automatically installed. As soon as the operating system reports the readiness for the new hardware component, can be continued.

2.

Install the ACC for the management of the network SENTINEL key (preferably via the command prompt with the command line utility -> haspdinst.exe using command "-i" for "installation") on the network/server computer and on the GIBcam client workstations. The SENTINEL should now appear in the ACC. Control the number of licenses.

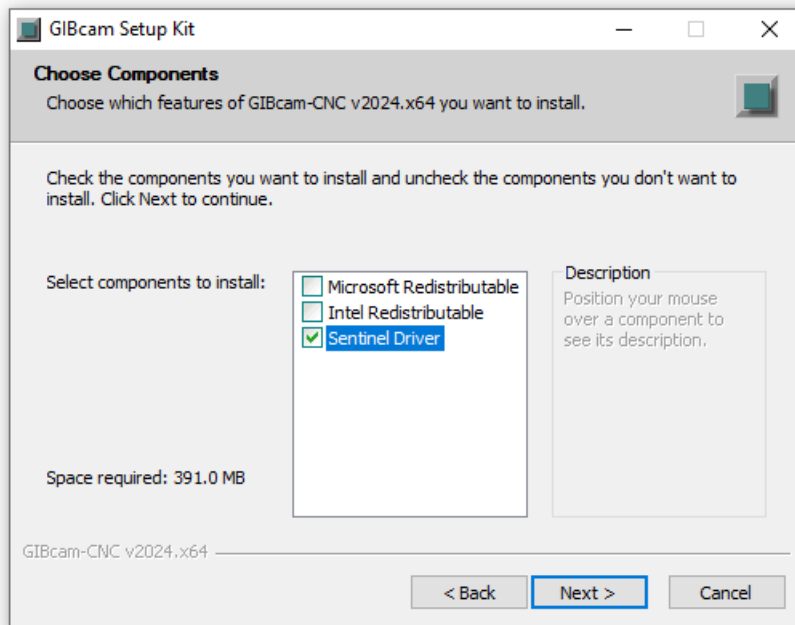
In the ACC various configuration of the access in subnets can be taken additional, extensive configuration for accessing the network. Can find further instructions in the documentation/help under the keyword 'SENTINEL'.

The SENTINEL driver software can be found after installing the GIBcam software in the programme/installation directory in the archive file SENTINEL_V***.RAR. Alternatively, it can also be found in the public area of the GIBcam FTP server (-> directory DATA\SETUP\LICENSE.SENTINEL).

3.

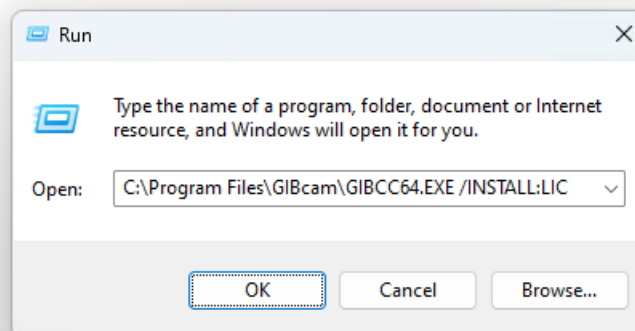
Start the GIBcam setup kit on the/each GIBcam client workstation and carry out the installation. A directory must be defined which will subsequently function as the GIBcam programme directory.

Activate the <Sentinel Driver> option during the installation process.

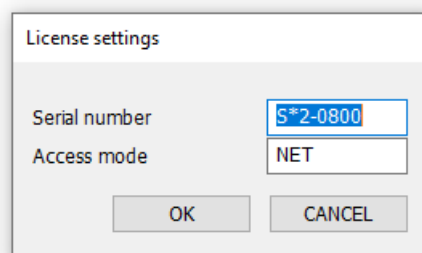


Then start GIBcam. Normally the GIBcam licence key is automatically recognised in the network - otherwise an additional configuration step must be carried out: the new GIBcam serial number must be entered. This is simply done using the command line call via [WIN]+[R]:

GIB*.EXE /INSTALL:LIC**



In the dialog box that appears is the GIBcam serial number (see label of license key) to enter and to specify the access mode **NET**.



It may also be necessary to configure access to the licence server that has been set up. This is done using the ACC, which is called up in a browser on the local workstation with the address <localhost:1947>. The necessary adjustments are then made in the ACC under <Configuration>.

Sentinel Admin Control Center Log Out | Help

Configuration Host Name: c9x64-fa

Basic Settings Users **Access to Remote License Managers** Access from Remote Clients Client Identities Detachable Licenses Network

Allow Access to Remote Licenses ⓘ You may experience a delay of a few minutes before your changes take effect.

Broadcast Search for Remote Licenses ⓘ

Remote License Search Parameters

```
allow=192.168.0.23
allow=192.168.0.150
```

© 2023 THALES. All rights reserved. [English](#) [Deutsch](#) [Español](#) [Français](#) [Italiano](#) [日本語](#) [Русский](#) [中文](#) Run-time Installer 9.15.153422.1

4.

Check the basic functionality of additionally licensed CAD /INTERFACE data interfaces. With a network licence, these are licensed on the network computer by the FlexNET network licence service. This service must be installed separately (see additional information).

5.

If a separate post processor file belongs to the scope of the GIBcam installation files, you enable it under menu point <CNC/Options>.

[You will find more detailed information about installing the GIBcam software in the documentation/help.](#)



Do it smart - use CAM competence ... GIBcam CAD/CAM software

www.gibcam.com